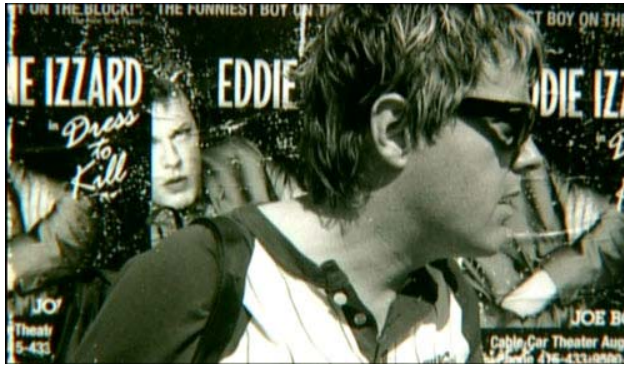


Eddie Izzard to Appear One Night Only in Litquake Fundraiser



Izzard photo courtesy of *Believe* website; Sarah Townsend photo - Craig Cameron Olson

Believe – The Eddie Izzard Story set to premiere in San Francisco at the Embarcadero Cinema Center on Thursday March 25th at 7pm; Izzard and film's director Sarah Townsend will take the stage following film for audience Q & A

Tickets \$20.00 available in advance at brownpapertickets.com; DVDs available for purchase and signing after

San Francisco, March 2010 – The acclaimed documentary, *Believe – The Eddie Izzard Story* will premiere in San Francisco at the Embarcadero Cinema Center on March 25th. *The Los Angeles Times* noted that, 'Filmmaker Sarah Townsend's heartfelt documentary on comedian/actor Eddie Izzard blends home movies, interviews and performance footage to fine effect.' Comedian/actor, Eddie Izzard, and the film's director Sarah Townsend will participate in an audience Q & A following the screening.

Signed DVD copies of the film will be also for sale.

Proceeds generated from the event will go toward putting on Litquake 2010, scheduled for October of 2010.

Litquake is well known not only for its love of the written word, but also for its admiration of the chops and skills unique to stand-up performers. In 2009 Lewis Black also donated his time and energy to a Litquake fundraiser.

While the fleet thinking and agile-minded Izzard is well known to audiences all across Europe and America, his base of fans here in the city by the bay is particularly avid about the man's work.

Director Sarah Townsend revisits Izzard's remarkable life by weaving a multi-layered tapestry around his confessions to the camera. Insights come from charming childhood home movies, enlightening vintage street-comedy footage, and friend/celebrity interviews.

Cameras get intimate access to his comedy comeback tour, watching Izzard work around the world to refine his latest inspirations prior to a crucial debut at London's prestigious Wembley Arena. Woven alongside are flashbacks charting Eddie's amazing trajectory.

The film's director has 'believed' in Izzard for 20 years, since he came to perform at a venue she was running. Despite falling asleep the first time she saw him, Townsend would become a steadfast fan, collaborator. Her unparalleled access to Izzard's friends, family and colleagues facilitates the broad scope of this affectionate yet clear-eyed chronicle of a complex personality.

More information on the film available at

Screeener as well as high-res photos available by contacting liam@shaveandahaircut.biz

What: SF debut of *Believe – The Eddie Izzard Story*

Who: with in-person appearance by Eddie Izzard and film's director Sarah Townsend; Audience Q & A to follow screening

When: Thursday, March 25 at 7pm

Where: Embarcadero Cinema Center - One Embarcadero Center, promenade level

Cost: \$20.00

Tickets: brownpapertickets.com

About Sarah Townsend

Producer / director Sarah Townsend has made a name for herself across the genres of theatre, film, stage shows, and documentary filmmaking. Her talent for story-telling – cultivated through an innate passion for music, mime, movement,

and humor – continues to develop with her diverse body of work.

Townsend is currently in development on *White Horses*, scripted by Diane Weipert. The thriller, set in rural England, begins production in 2010. Also upcoming for Townsend is the DVD release of her documentary film *Believe – The Eddie Izzard Story*, which she wrote, directed, and produced. The documentary follows the life and career of Izzard, weaving together past footage and current interviews in “fine effect” (Los Angeles Times) to reveal a raw perspective on the creative mastermind. *Believe – The Eddie Izzard Story* was released in theatres in the United Kingdom and the United States in October 2009, and will be released on DVD on March 2, 2010.

Townsend’s theatre credits include productions of *Medicin Malgre Lui*, *Blood*, and *Epicoene*. She has also produced a number of award winning short films based on her own theatre productions, including *Secrets*, *Angel*, and *Whacked*. In addition to screening at the Cannes Film Festival and on Sky Movies Max, *Whacked* also earned nods from the New York International Film Festival, Turner Classic Movies Shorts Awards, and the US International Film Festival. Throughout her career, Townsend has also produced and directed other Izzard projects, including *Eddie Izzard: Stripped*, and *Eddie Izzard: Live from Wembley*.

Townsend splits her time between the United Kingdom and Los Angeles.

About Litquake

Litquake, San Francisco’s annual literary festival, was founded by Bay Area writers in order to put on a week-long literary spectacle for book lovers, complete with cutting-edge panels, unique cross-media events, and hundreds of readings. Since its founding in 1999, the festival has presented more than 2300 author appearances for an audience of over 53,000 in its lively and inclusive celebration of San Francisco’s thriving contemporary literary scene. Litquake seeks to foster interest in literature, perpetuate a sense of literary community, and provide a vibrant forum for Bay Area writing as a complement to the city’s music, film, and cultural festivals. www.litquake.org

Shave and a Haircut
3685 17th Street, Studio 3
San Francisco, California 94114
